

# Light and Life in the Bush

**BUSH** LIGHT

Newsletter No. 6

June 2004

[www.bushlight.org.au](http://www.bushlight.org.au)

*In this edition...*

*The latest on procurement tenders, plus updates from North Queensland, Kimberley and the Top End, Bushlight in the class room in Central Australia, and new information on the website.*

## North Queensland

### Peninsula

Mr Eddie Woodley, Chair of Peninsula Regional Council signed a Memorandum of Understanding (MOU) with Bushlight on Friday, 4 June. Project activity is anticipated to increase in the Peninsula region in the new financial year.



*Potential Bushlight community on Cape York Peninsula*

Development of a Regional Energy Plan for the Peninsula is progressing and includes visits to Homeland communities, resource and support agencies, ATSI and ATSIIC to agree on regional energy needs and priorities. Bushlight will commence Community Energy Planning in a number of Peninsula homelands in the next few months.



*Using a Solar Pathfinder to check the roof orientation for possible future PV array location - Gunun Woonun*

### Gulf and Western Queensland

John Hopkins and Jane Errey, of the Bushlight North Queensland team, have been working with Birri Williams and Gunun Woonun communities on Mornington Island in the Gulf of Carpentaria. As a result of this work, RE systems are expected to be installed in each homeland in mid July. Community Energy Planning will soon commence in two additional communities on Mornington Island.



*Discussing the options for energy systems at Birri Williams on Mornington Island*

## Bushlight Household RE System installation tenders

Bushlight is entering the next phase of its procurement program for Household RE Systems.

The installation of systems, generally including supply of batteries and PV arrays, is currently being tendered out (individually or in small groups) to regionally based RE system installation businesses. Three tenders have recently been called for the installation of ten systems across the Northern Territory and Kimberley regions. For these contracts, the core component of the systems, the Bushlight Equipment and Battery enclosure, will be issued to the successful tenderers.

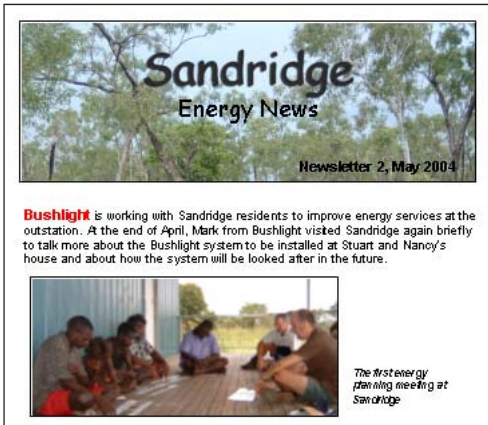
A further two tenders for the installation of three systems in the Borroloola Region of the Top End and two systems on Mornington Island in North West Queensland will be released over the coming weeks. Tenders for the supply and installation of an additional thirty systems will be let over the next 12 months.

Businesses interested in tendering for Bushlight RE System installation contracts should contact our Capital Works Manager, Lyndon Frearson, on telephone (08) 8951 4341, or email [lyndon.frearson@bushlight.org.au](mailto:lyndon.frearson@bushlight.org.au).

**Improving Livelihood Choices for Indigenous People  
through Improved Access to Sustainable and Renewable Energy Services**

## Top End Homelands get improved energy services

The Bushlight Top End team is preparing for installations of Bushlight RE systems at Milibundurra and Sandridge homelands near Borroloola in the NT Gulf country and at Bawaka on Port Bradshaw in East Arnhem Land. Five Bushlight RE systems are to be installed at these three communities with installation and user training to take place in July and August. In the meantime we're finalising the Community Energy Plans for these communities which outline the long term maintenance and servicing responsibilities of Bushlight, the resource agencies and community residents. Central to this is deciding upon an agreed user contribution rate to ensure that sufficient funds are set aside to cover future maintenance and equipment replacement costs and to keep the Bushlight solar systems working well.



Newsletters provide ongoing information for communities during the Bushlight project

Energy planning is also under way at Wumajbarr homelands near Numbulwar, with a further Bushlight system to be installed in September/October to supply renewable energy to three houses.



Community Energy Planning group at Wumajbarr

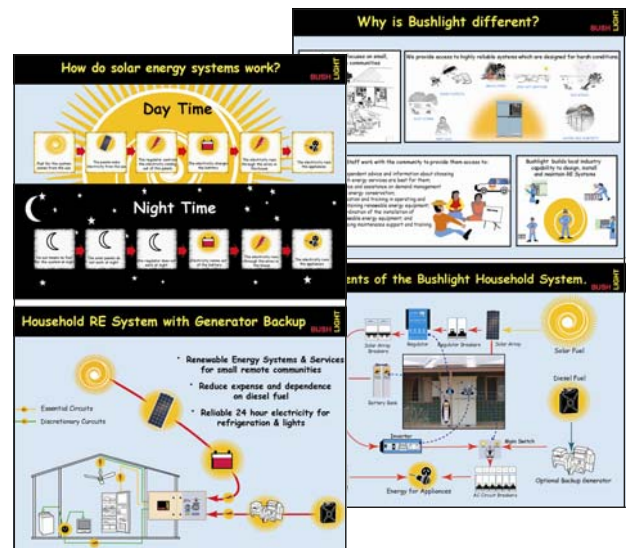
In other work Rhys Arnott has been busy travelling throughout the Top End visiting homelands to help develop Regional Energy Plans.

Recently completed plans for the Garrak-Jarru and Miwatj regions have been adopted by both these ATSIC Regional Councils. Regional Energy Plans have been developed via the process of visiting all potentially eligible homelands and then working with regional stakeholders (including ATSIS offices, Regional Councils and Resource Agencies) to determine the homelands Bushlight will be working with over the next two years.

## Kimberley

John Schmidt and David D'Antoine from the Bushlight Derby office, with colleagues from CAT, participated in the recent North West Expo in Broome. There was good attendance at the Expo, which was held over two days in May, and the team answered many questions from suppliers, community members and the general public about the Bushlight Project.

Posters used at the Expo will also appear in the new training centre at the Mamabulanjin Resource Agency in Broome, which is expected to be completed soon.



Bushlight posters will provide information at the new Mamabulanjin Training Centre in Broome

John recently visited the very remote Kartang Rija community at Turner River. John took the opportunity to talk with community members about their aspirations and energy needs, and gathered basic information for the Regional Energy Plan. The Kartang Rija people have

all they need for year round occupancy of their country except for reliable renewable energy services, so they were enthusiastic to learn how the Bushlight project could help them.



Community members at Kartang Rija with John Schmidt

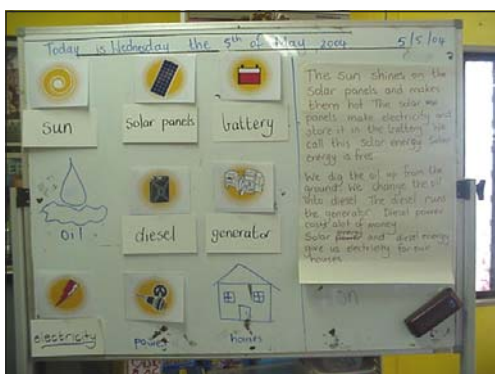
In June and July the team is focused on completing the current round of Bushlight installations before starting the next group of Community Energy Plans for 2004-05.

## Central Australia—Bushlight moves to the classroom

After seeing the Central Australian Bushlight team using a range of activities and resources during energy planning in Mulga Bore, schoolteacher Lisa Hall's imagination was fired to include an energy lesson in her program at the school. Bushlight wholeheartedly supported the idea—it would raise awareness of the energy concepts and issues among the kids, and help them contribute to discussions in their homes and around their community.

After talking with Lisa about her ideas, Bushlight provided some resources that she was able to use to develop an energy lesson that fitted within the curriculum.

Lisa introduced the concept of energy, talking about the different kinds used and how they



Explaining how energy is made from different fuel sources

are made. Bushlight energy icons were used to show different fuels and ways in which these were converted into energy that could be used.

The discussion then concentrated on electricity and how it was used at the school. Some school activities that use electricity were music, computing and cleaning. This introduction allowed the kids to understand where energy came from and how we use it.



Mulga Bore teacher, Lisa Hall, takes a lesson on energy

The class was split into groups and each was given a drawing of a house. Using the Bushlight appliance cards everyone worked out what appliances would be used in the house. When the pictures were finished, the whole class talked about how much energy each appliance used. The kids learnt about the way the number of people in a house, and the appliances they use, affect the amount of energy used.



Working out what appliances need electricity in everyone's houses

The kids were then able to write short stories about how solar power and diesel power came about and how electricity was used in the house.

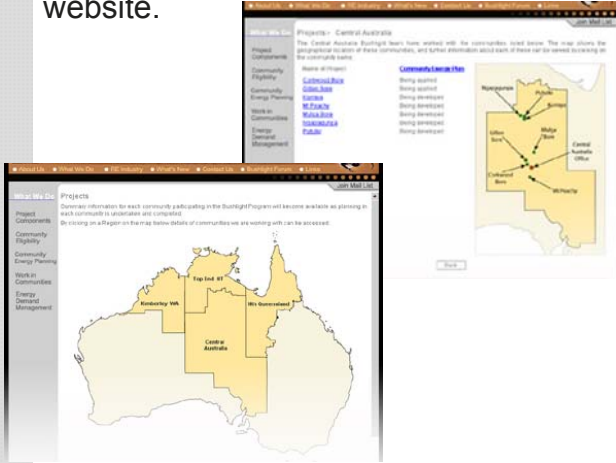
Finally, the kids made up a song about energy, which was recorded onto CD.

# Bushlight Website Upgraded



## Work in Communities

Bushlight is now working in about 30 remote Indigenous communities across north and central Australia. A summary of work in each community is now available on the Bushlight website.



Go to [www.bushlight.org.au](http://www.bushlight.org.au), look under **What We Do**, open the **Work in Communities** page and click on one of the Bushlight regions.

You'll see a map showing participating communities and be able to read a summary of Bushlight's work in each community.

Information provided for each community covers areas such as:

- The community structure
- Energy planning issues
- Details of Bushlight renewable energy systems installed
- Expected diesel and greenhouse gas savings

New summaries will continue to be added as Bushlight regional staff facilitate and complete energy planning in additional communities.



## Facts Sheets and Case Studies

*Fact Sheets* are also now available on the website. These describe technical details and energy management arrangements of installed systems, arrived at by communities after energy planning discussions. The *Fact Sheets* are added to the website as energy systems are commissioned. They detail:

- Renewable energy system specifications
- Energy load variations
- Technological demand side management arrangements
- Details of appliance replacement or acquisition
- Deferred energy loads
- Generator only circuits
- Other energy services

Bushlight is also preparing occasional *Case Studies* on different participating communities to look at the impact that changed energy services have on communities. The first *Case Study* is now on the website.

**To find *Fact Sheets* and *Case Studies* on the website, go to *What's New* and open *Case Studies* and *Fact Sheets*.**



### Bushlight Contacts

Bushlight Administration  
 PO Box 8044, ALICE SPRINGS NT 0871  
 Tel (08) 8951 4344, Fax (08) 8951 4333  
[enquiries@bushlight.org.au](mailto:enquiries@bushlight.org.au)

Central Australia 32-38 Priest St PO Box 8044 ALICE SPRINGS NT 0871 Tel (08) 8951 4342 Fax (08) 8951 4333 <a href="mailto:rmcentral@bushlight.org.au">rmcentral@bushlight.org.au</a>	Top End Suite 1/20 Knuckey St GPO Box 2875 DARWIN NT 0801 Tel (08) 8981 7599 Fax (08) 8981 7233 <a href="mailto:rmtopend@bushlight.org.au">rmtopend@bushlight.org.au</a>	Kimberley WA 3/68 Clarendon Street PO Box 1304 DERBY WA 6728 Tel (08) 9191 2585 Fax (08) 9191 2598 <a href="mailto:rmderby@bushlight.org.au">rmderby@bushlight.org.au</a>	North Queensland 7/330 Sheridan Street PO Box 6182 CAIRNS QLD 4870 Tel (07) 4031 0505 Fax (07) 4031 0431 <a href="mailto:rmcairns@bushlight.org.au">rmcairns@bushlight.org.au</a>	Technical Services Murdoch University South Street MURDOCH WA 6150 Tel (08) 9360 7351 Fax (08) 9360 2204 <a href="mailto:techserv@bushlight.org.au">techserv@bushlight.org.au</a>
Regional Manager Tig Armstrong	Regional Manager Zoë Pilven	Regional Manager John Schmidt	Regional Manager John Hopkins	Technical Services Manager Les Jones

Light and Life in the Bush

BUSH LIGHT